

Current Population Survey (CPS) & Survey of Income and Program Participation (SIPP)

Dan Perez-Lopez

**Program Participation and Income Transfers Branch
Social, Economic, and Housing Statistics Division
U.S. Census Bureau**

Outline

- Current Population Survey (CPS)
 - Background
 - Design
 - Supplements
 - Examples
- Survey of Income and Program Participation (SIPP)
 - Background
 - Design
 - Topical Modules
 - Examples
- Survey Comparison (CPS vs. SIPP)
- Overview of Census Bureau Products
- Exercises

Current Population Survey (CPS): Background

- 1930s – The Great Depression
 - No data to gauge severity
 - Needed to track trends and assess policy
- Early 1940s: Monthly National Labor Force Survey initiated jointly with the Bureau of Labor Statistics (BLS) and Census Bureau
- Foundation for the CPS, still run jointly with the Census Bureau and BLS

Current Population Survey (CPS): Design

- General web page: www.census.gov/cps
- National, cross-sectional, monthly survey
 - Sample consists of about 60,000 households
 - Universe: Civilian, noninstitutionalized population
 - Excludes people in the military and those in jail, hospitals, etc.
- Consists of two parts:
 - Basic interview
 - Supplements
- Basic interview
 - Poverty and labor force characteristics
 - Source of the official statistics on (un)employment

Current Population Survey (CPS): Supplements

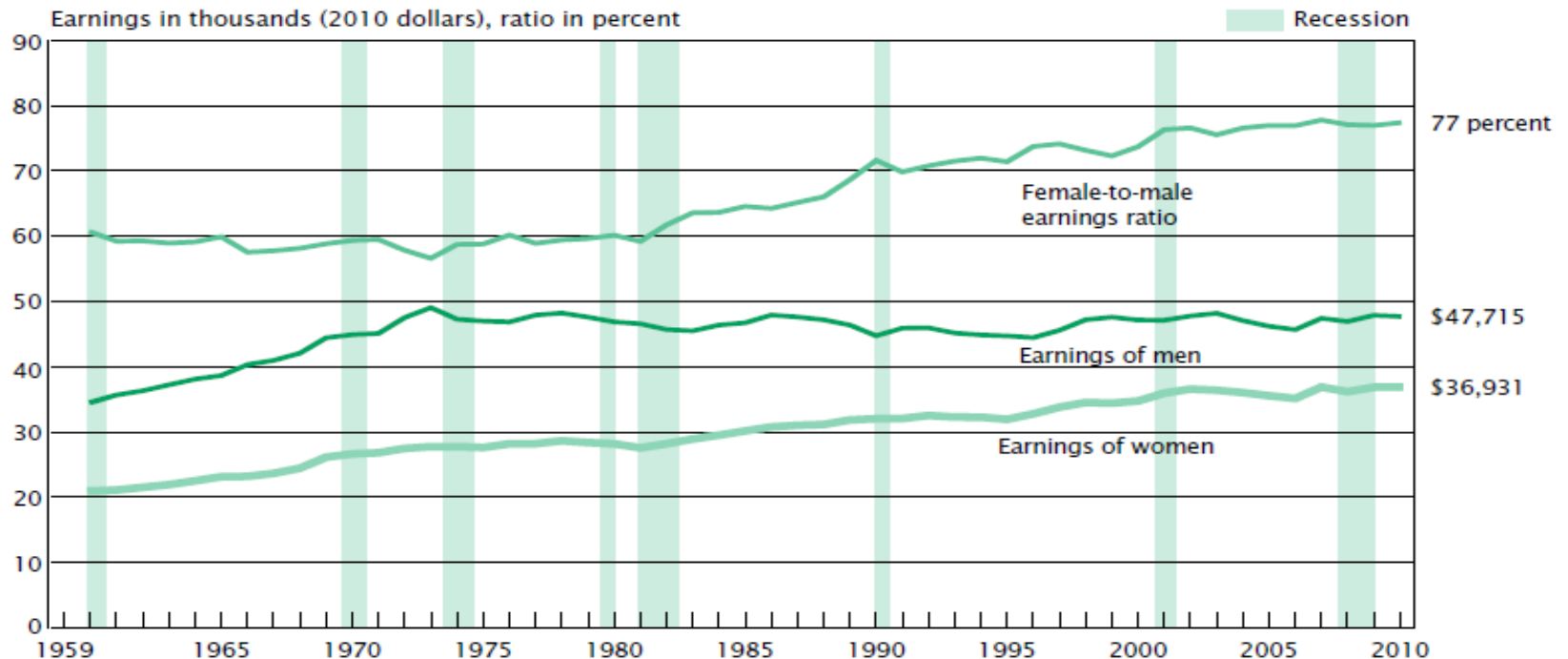
- Most topics asked annually
- Others asked less frequently
- Survey usually includes one supplement per month
- Examples:
 - Fertility
 - Tobacco use
 - Voter participation
 - School enrollment
 - Food security
 - Annual Social and Economic Supplement (ASEC)

Annual Social and Economic Supplement (ASEC)

- Provides supplemental data on:
 - Work experience
 - Income
 - Non-cash benefits
 - Migration
 - Education
 - Child support
- Takes place annually in the spring
 - Formerly called the March Supplement
- Provides national poverty and health insurance estimates

Income, Poverty, and Health Insurance in the United States: 2010 (P60-239) Issued September 2011

Figure 2.
Female-to-Male Earnings Ratio and Median Earnings of Full-Time, Year-Round Workers
15 Years and Older by Sex: 1960 to 2010

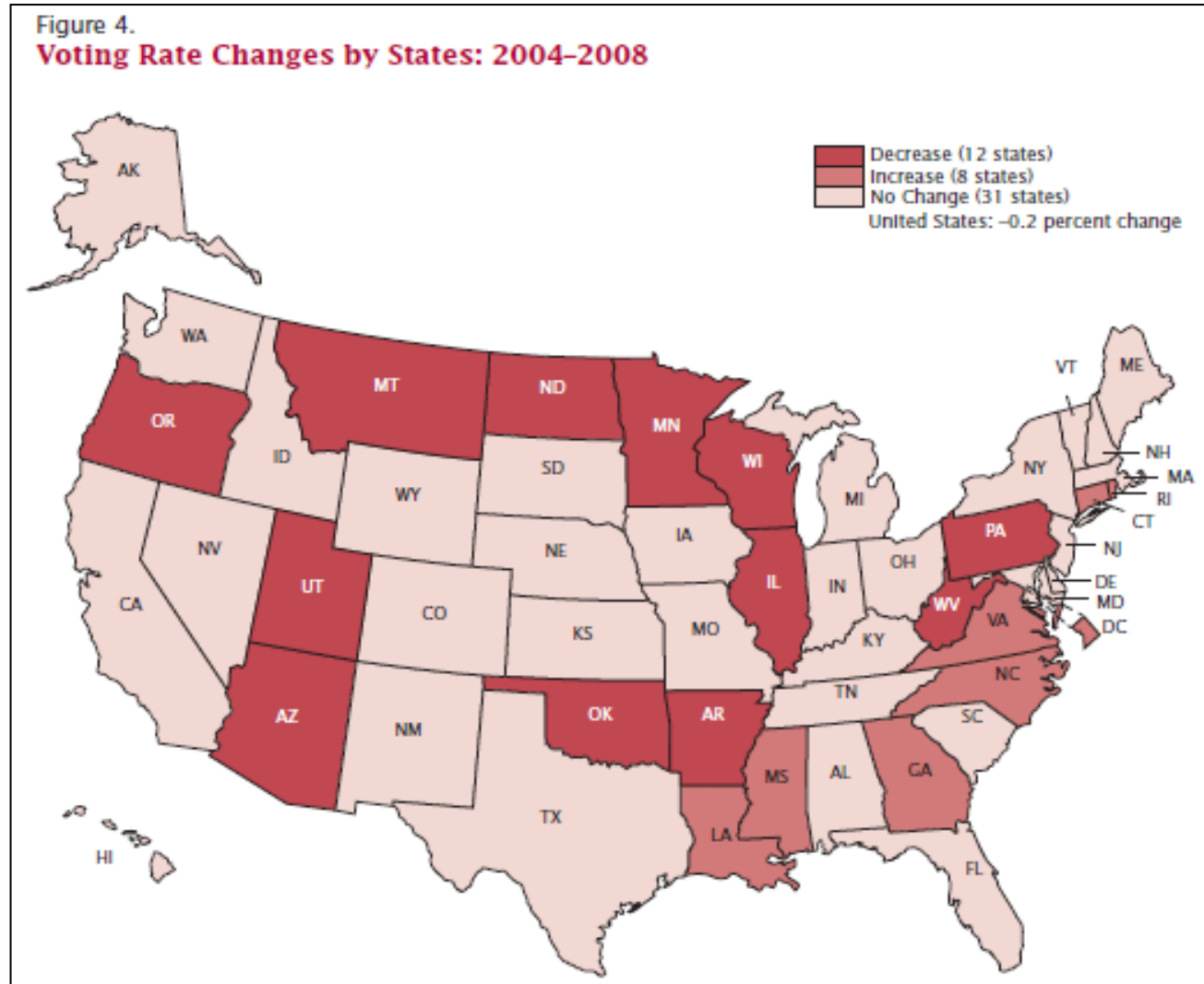


Note: Data on earnings of full-time, year-round workers are not readily available before 1960. For information on recessions, see Appendix A.
Source: U.S. Census Bureau, Current Population Survey, 1961 to 2011 Annual Social and Economic Supplements.

CPS Voting Supplement

Voting and
Registration in the
Election of
November 2008

(P20-562)
Issued May 2010



CPS School Enrollment Supplement

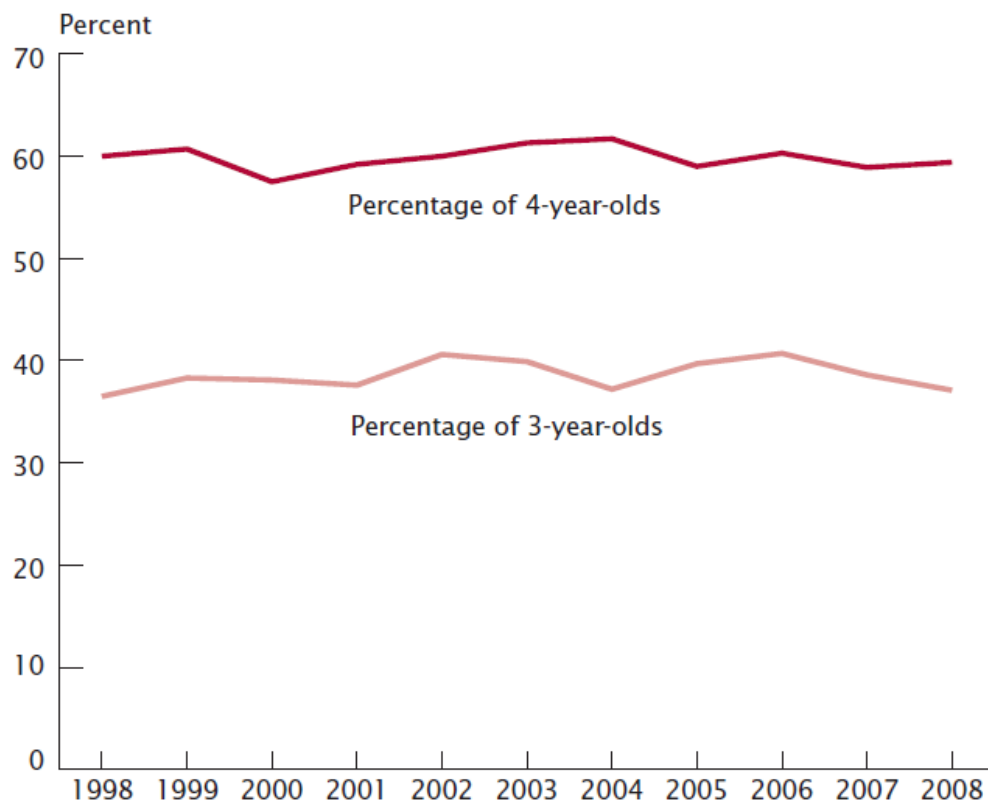
School Enrollment
in the United
States: 2008

(P20-564)

Issued June 2011

Figure 2.

Nursery School Enrollment of 3- and 4-Year-Olds: 1998 to 2008



Source: U.S. Census Bureau, Current Population Surveys, October 1998–2008.
For information on sampling and nonsampling error, see
<www.census.gov/apspd/techdoc/cps/cpsoct08.pdf>.

Survey of Income and Program Participation (SIPP): Background

- Longitudinal survey that follows respondents over time
 - First panel started in 1984
 - Current panel started in 2008
- SIPP was designed to study:
 - Labor market dynamics
 - Social welfare program participation and dynamics
 - Aspects of family change

Survey of Income and Program Participation (SIPP): Design

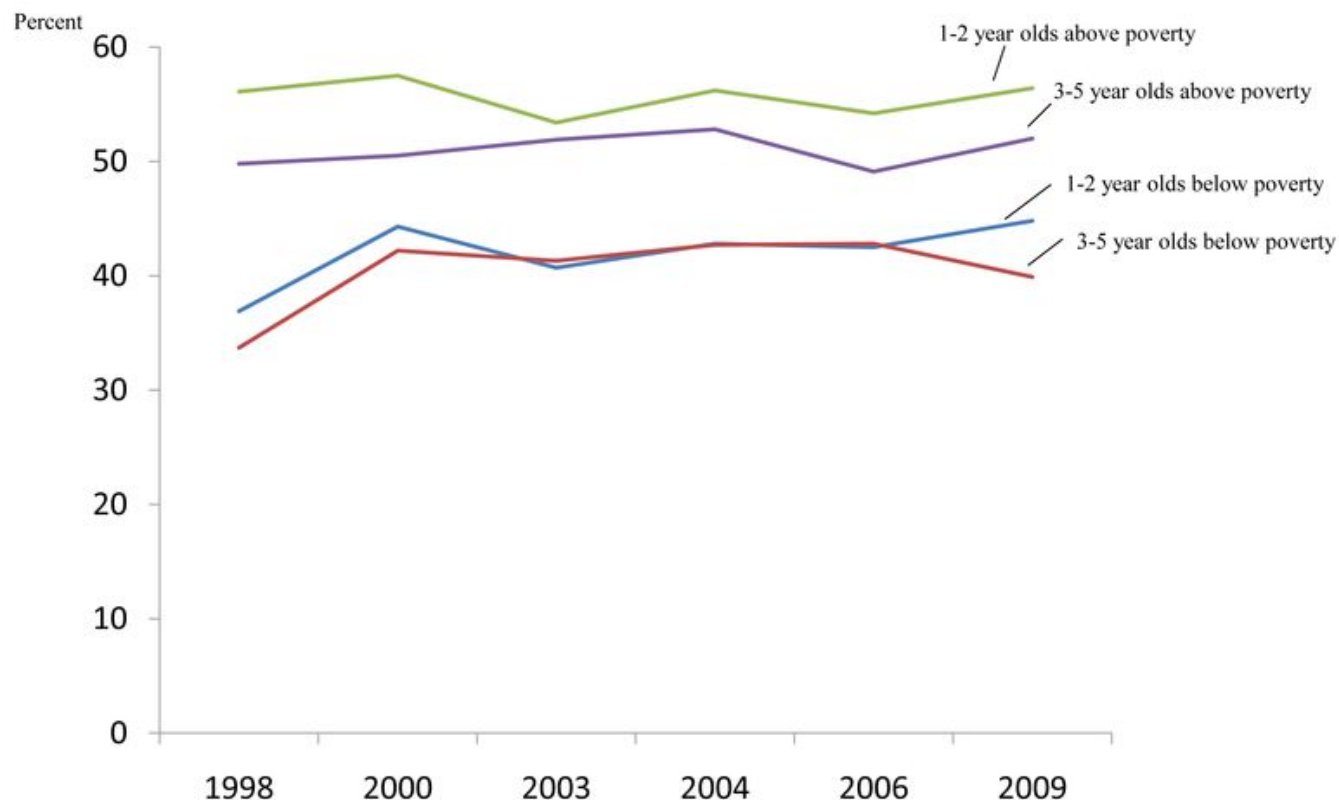
- General web page: www.census.gov/sipp/
- National panel survey
 - Panels range from 2½ years to 4 years
 - 3 interviews a year, each interview is a wave
 - Current sample of 37,000 households
 - Universe: Civilian, noninstitutionalized population
 - Excludes people in the military and those in jail, hospitals, etc.
- Consists of two parts:
 - Core interview, every wave/interview
 - Topical modules
- Core interview
 - Monthly data for 3-4 year periods
 - Covers work, income, assets, programs, health insurance

Survey of Income and Program Participation (SIPP): Topical Modules

- Most topics asked once per panel
- Others asked annually
- Usually includes several topical modules per wave
- Examples:
 - Fertility history
 - Marital history
 - Migration history
 - Work schedule

SIPP Child Well-Being Topical Module

Percent of Children Read to 7 or More Times Per Week by Poverty Status and Age: 1998-2009



A Child's
Day: 2009

(P70-118)

Issued

August 2011

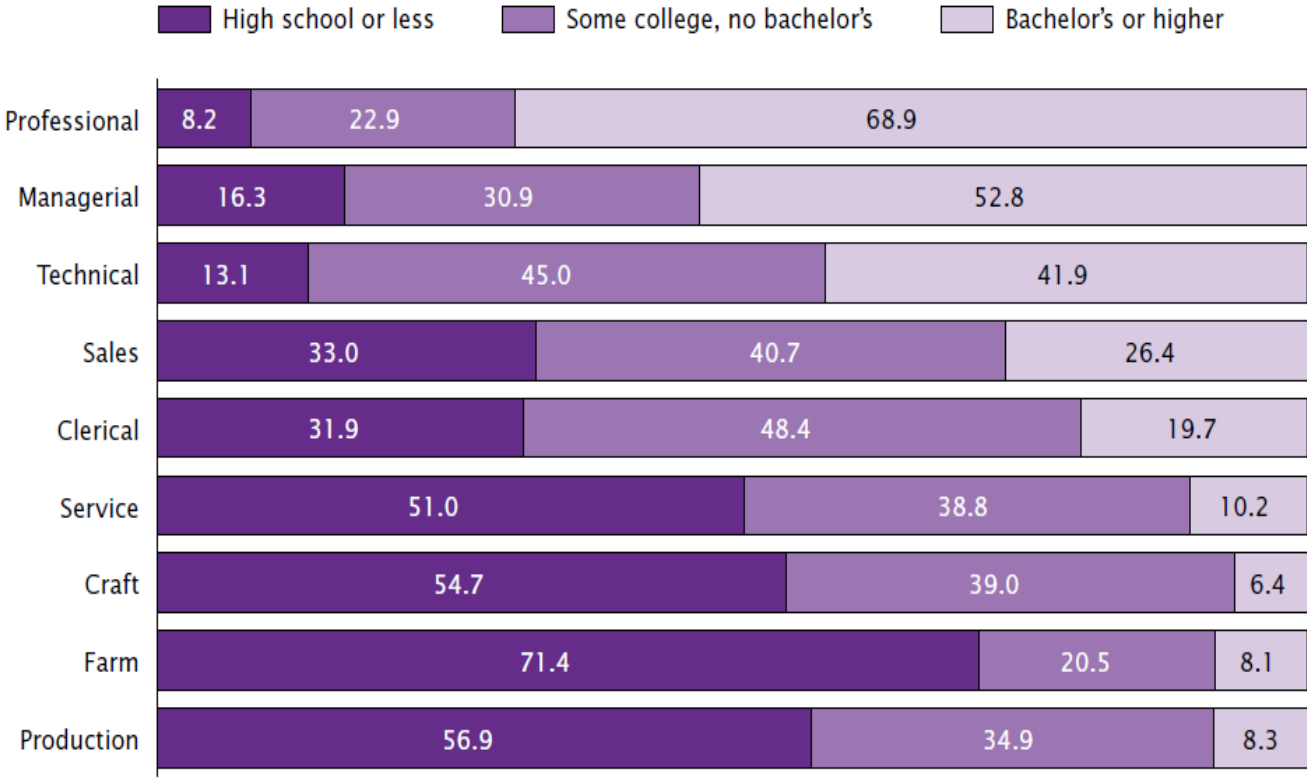
Source: U.S. Census, Survey of Income and Program Participation (SIPP), 1996 Panel Wave 6 & 12, 2001 Panel Wave 7, 2004 Panel Wave 3 & 8, 2008 Panel Wave 3

SIPP Education and Training History Topical Module

What It's Worth:
Field of Training
and Economic
Status in 2009

(P70-129)
Issued February
2012

Figure 2.
Educational Attainment by Occupational Groups: 2009
(In percent. Employed population aged 18 and older.)



Source: U.S. Census Bureau, Survey of Income and Program Participation, 2008 Panel.

CPS vs. SIPP

- Current Population Survey (CPS)
 - Cross-sectional: continually refreshed sample
 - Historical comparisons
- Survey of Income and Program Participation (SIPP)
 - Longitudinal: tracks same person over time
 - Detailed data on family and economic dynamics

Data from CPS and SIPP are confidential and protected by Title 13 of the United States Code.

CPS vs. SIPP Example

- Poverty rate is 14% for 2 consecutive years. What can CPS and SIPP tell us about this?

- CPS

- What are the characteristics of the population in poverty in each year?
- How does it compare historically?

- SIPP

- Were the same people in poverty both years?
- How long were spells of poverty?
- Associated with change in jobs, family, education?

SIPP Poverty Report

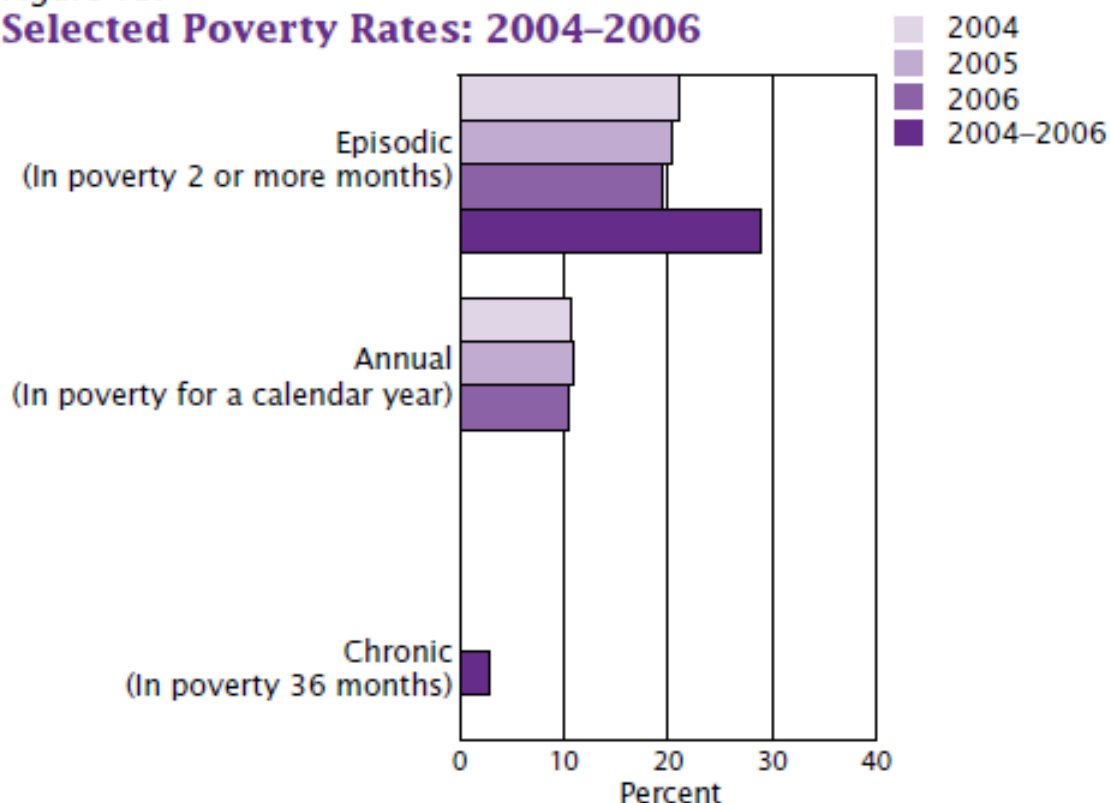
Dynamics of Economic Well-Being: Poverty, 2004-2006

(P70-123)

Issued March 2011

Figure 1b.

Selected Poverty Rates: 2004-2006



Note: Panel (2004 to 2006) and yearly estimates contain different samples. Calendar year estimates include people in the sample for 12 months whereas panel estimates include people in the sample for 36 months. The total number of respondents in each sample are as follows: 27,840 in the 3-year panel; 86,128 in 2004; 76,953 in 2005; and 34,372 in 2006. In wave 9 of the SIPP 2004 Panel there was a 53 percent sample reduction.

Source: U.S. Census Bureau, Survey of Income and Program Participation, 2004 Panel. For information on confidentiality protection and sampling and nonsampling error, see <<http://www.census.gov/sipp/source.html>>.

Survey Products: Reports and Table Packages

- Provide current information about specific topics
 - Reports written for general audience
 - Limited number of hard copies published
 - Available online in PDF form
 - Table packages provide reference material for many audiences
 - Online release only
- Best way to find reports and table packages:
 - Start at main Census website (www.census.gov)
 - Use ‘Subjects A to Z’ or ‘Search’ to find specific subject area web pages

Survey Products: Data Files

- Publicly available
 - DataFerrett - data mining tool available as web-based Java applet
 - FTP download page allows you to download the datasets for statistical purposes
- If you need access to restricted data, you can apply through Research Data Centers (RDCs)
- User groups, technical documentation, and other support also available

For More Information

- Demographic Call Center Staff
 - (301) 763-2422
 - (866) 758-1060 (toll free)
- Visit <http://ask.census.gov>